

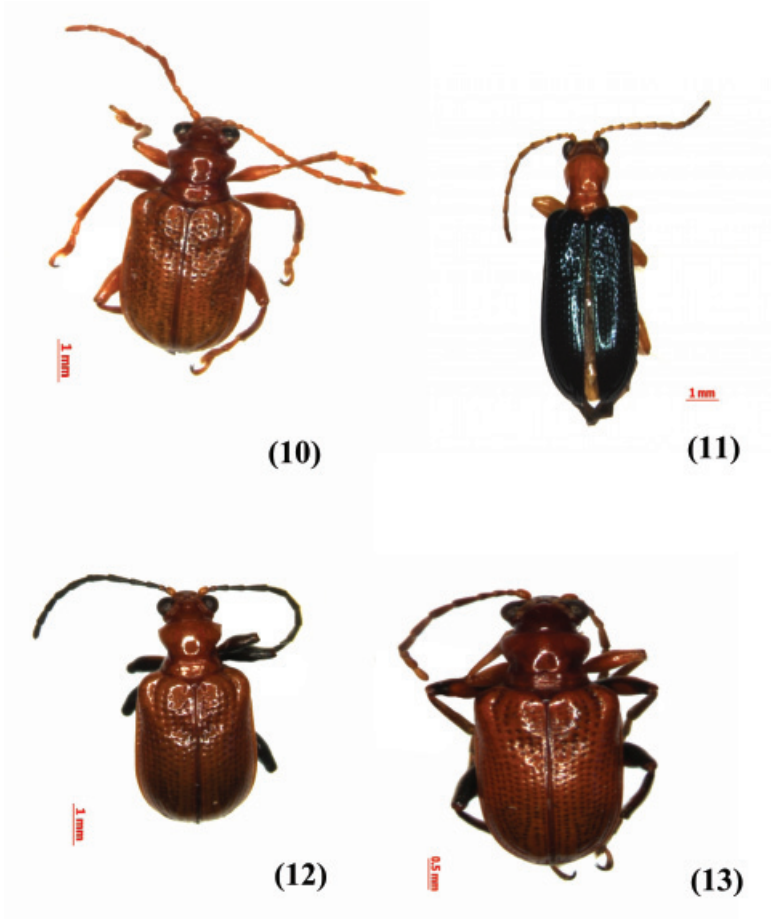
Serangga 14(1-2): 131-132
ISSN 1394-1530 © 2009, Centre for Insect Systematics,
Universiti Kebangsaan Malaysia & Department of Museums Malaysia

Correction to:

**THE LEAF BEETLES OF THE SUBFAMILY
CRIOCERINAE FROM
BALI, INDONESIA
Serangga 13(1-2): 101-124**

We regret for the wrong figure posted in page 120, Figs. 10-13 in above mentioned paper. The corrected Figures are on the next page.

Idris Abd Ghani
Centre for Insect Systematics
Universiti Kebangsaan Malaysia
43600 Bangi,
Malaysia



Figs. 10–13: 10, *Lema (L) feae* Jacoby; 11, *Lema (L) fruhstorferi* Jacoby; 12, *Lema (L) lacertosa* Lacordaire; 13, *Lema (L) phungi* Pic